



Fleets

Remote Monitoring and Control

Fleets

Fleets is a remote monitoring and control solution for energy storage, industrial, marine and automotive market. It is specifically developed for electrical powered objects that need remote monitoring and control.

We support a broad variety of communication protocols such as:

- CANbus/CanOpen/NMEA2000
- Modbus (TCP and RTU)
- Serial
- Digital I/O and optional relays
- PLC or other industrial PC's

With our cloud solution we bring the data from different devices and protocols together and present it together in one portal. We show the data on a uniform way, so the user have a clear view of his fleet/assets and can easily compare the data. Also, we can control remote functions if it is safe and allowed such as starting a generator or other systems.

To collect the data from the object we provide a range of modules that can capture the data. In de last slide you can find a list of our modules that we have available. Besides our modules we can also connect with API's, or third parties can connect with their API with our platform.

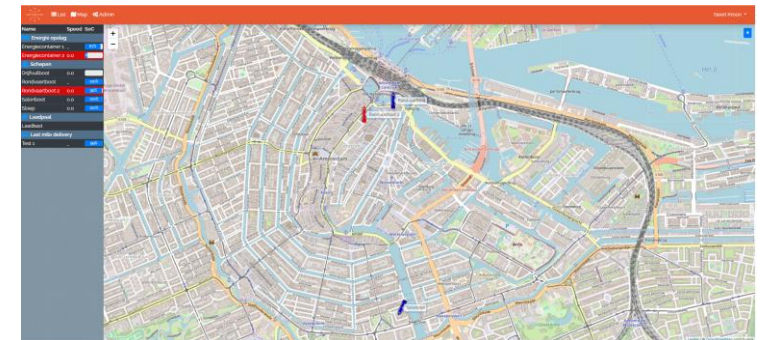
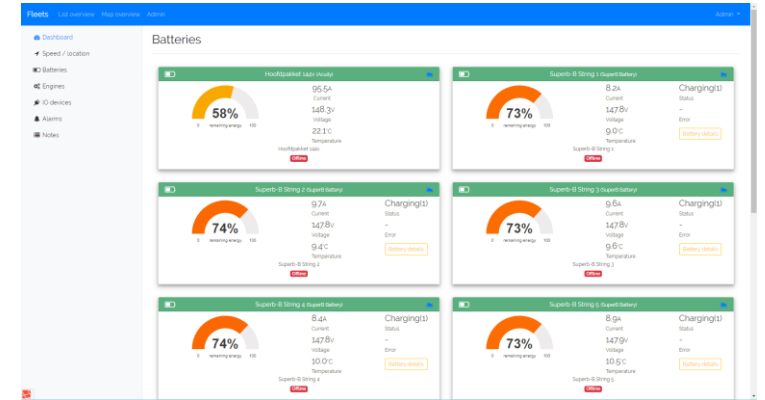
Fleets setup



CanOpen
Modbus
Serial
or other protocol

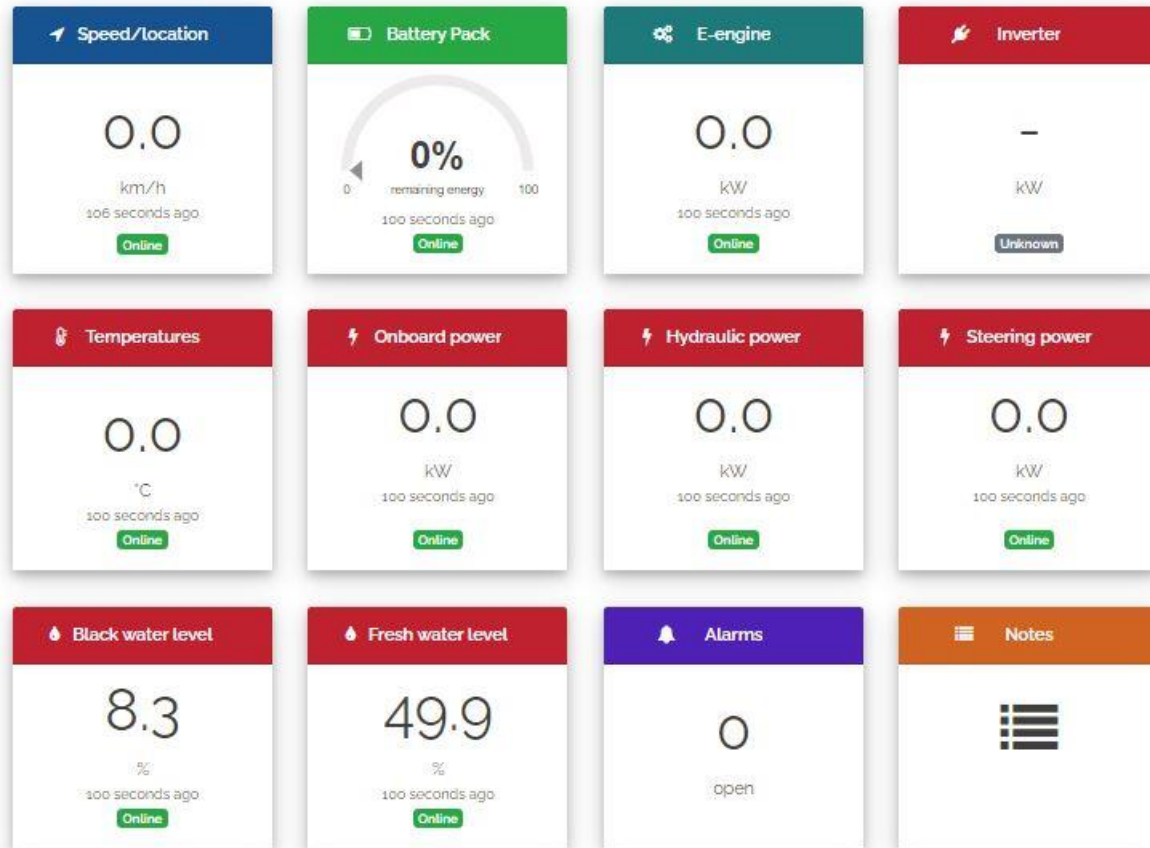


Internet/4g



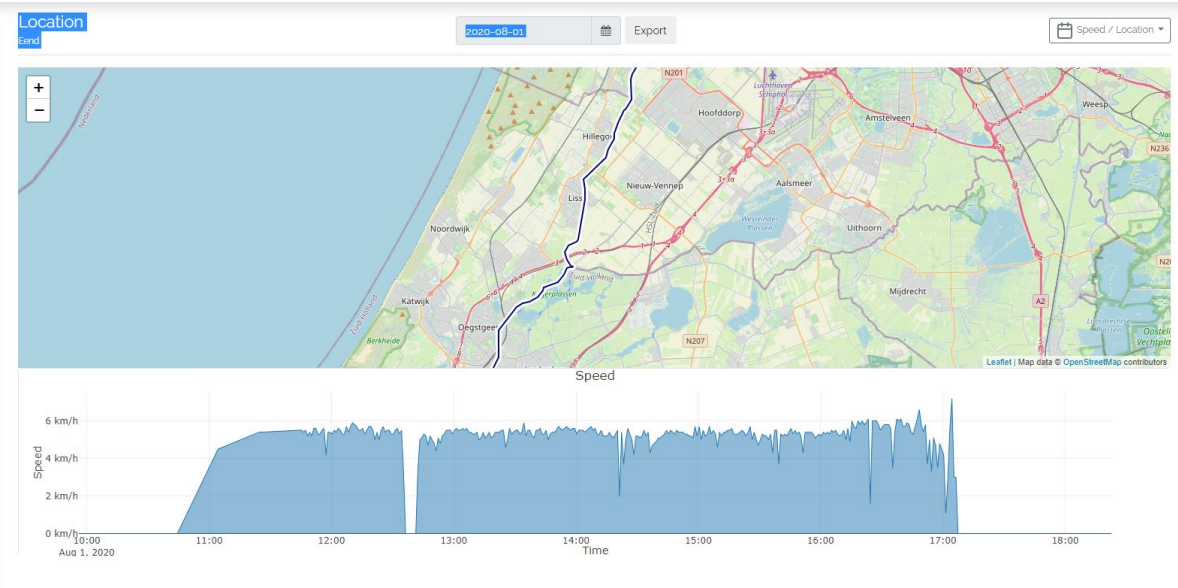
Visualization of components

Online Status

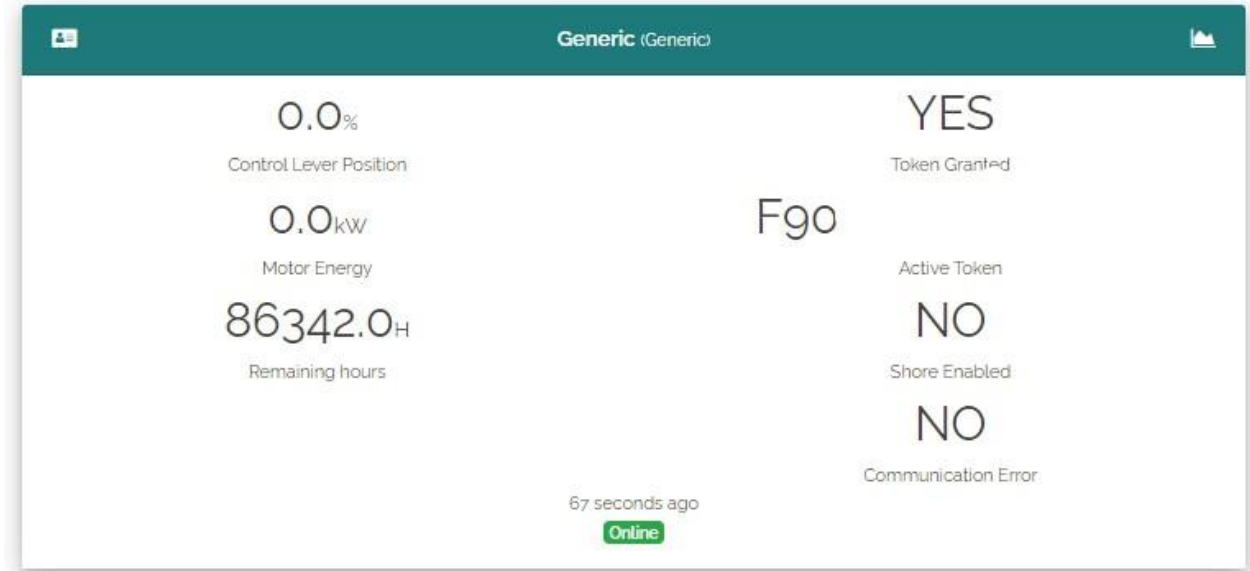


Simple overview of all essential information of your asset, and allows you to see more detailed information of each component.

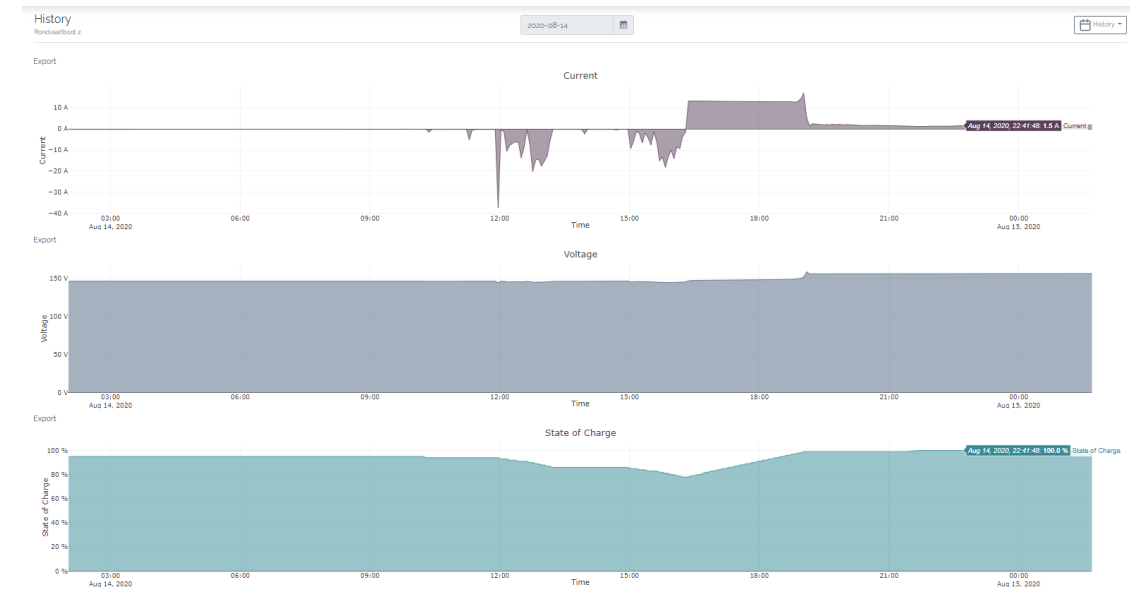
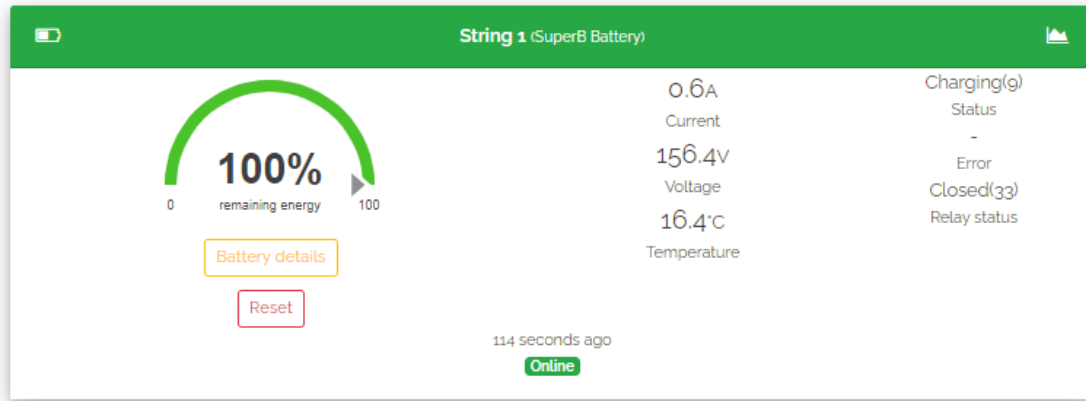
GPS track and speed data



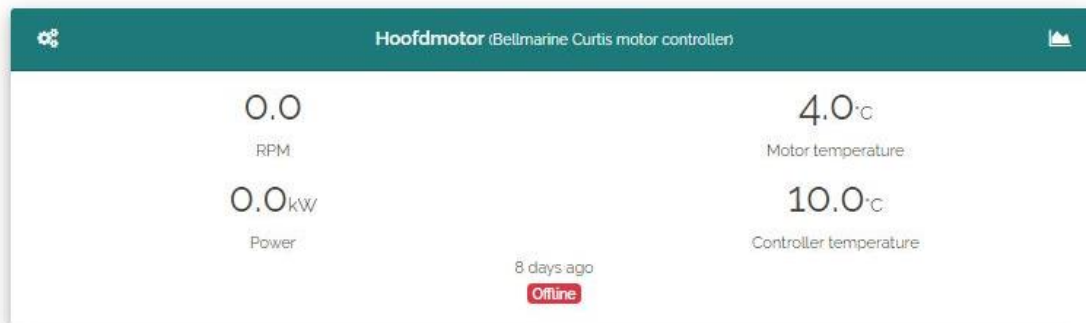
Operational information



Example battery data



Example engine data



Fleets modules

Fleetsmodule pro

The Pro is suitable for complex setups where different communication sources have to be brought together. The Pro is able to process multiple data sources simultaneously and has galvanically separated ports. The module has an integrated modem and GPS. This module can be expanded with the Relay-I / O module and external GPS and 4G antenna.

Specs:

- 2x CANbus galvanically isolated
- 4x serial galvanically isolated
- 2x modbus RTU
- 1x modbus TCP
- Internal GPS
- Power 9-32 Volt



Fleetsmodule lite

The basic is intended for reading one or two different data sources. Supports all common communication protocols and comes with an integrated 4G module and GPS. This module is especially suitable when low power consumption is essential. This module can be expanded with the Relay-I / O module and external GPS and 4G antenna.

Specs:

- 1x canbus
- 1x serieel
- 1x modbus rtu
- 1x modbus TCP
- Internal GPS
- Power 9-48 volt



Fleetsmodule automotive

The automotive module is suitable for vehicles that have standardized Canbus communication for the automotive industry (such as OBD2). In addition, it is possible to read a serial connection if it complies with the standards of RS232 and RS485. This module is especially suitable for OEM delivered vehicles such as buses, trucks and cars.

Specs:

- 1x CANbus
- Serieel RS232/RS485
- GPS internal
- Power 9-32 volt



Relay-I / O expansion board

Relay-I / O module is intended to read in and outputs. In addition, 4 relays that can be switched. These relays can power up to 10A and a maximum of 250 volts. The module provides its own constant current of 5V. The module itself requires a voltage of 12-24 volts.

Specs:

- 4x I/O in/output
- 3x Relays
- Thermostat relays with temp. sensor
- Power 12-24 volt
- Serial connection with Fleetsmodule (pro and lite)

Contact

For more information please contact:

Sales

Geert Kroon

+31(0)641212736

Geert.kroon@globalguidesystems.com

Address:

HQ Global Guide systems

Mauritsstraat 11

2011VN Haarlem Netherlands